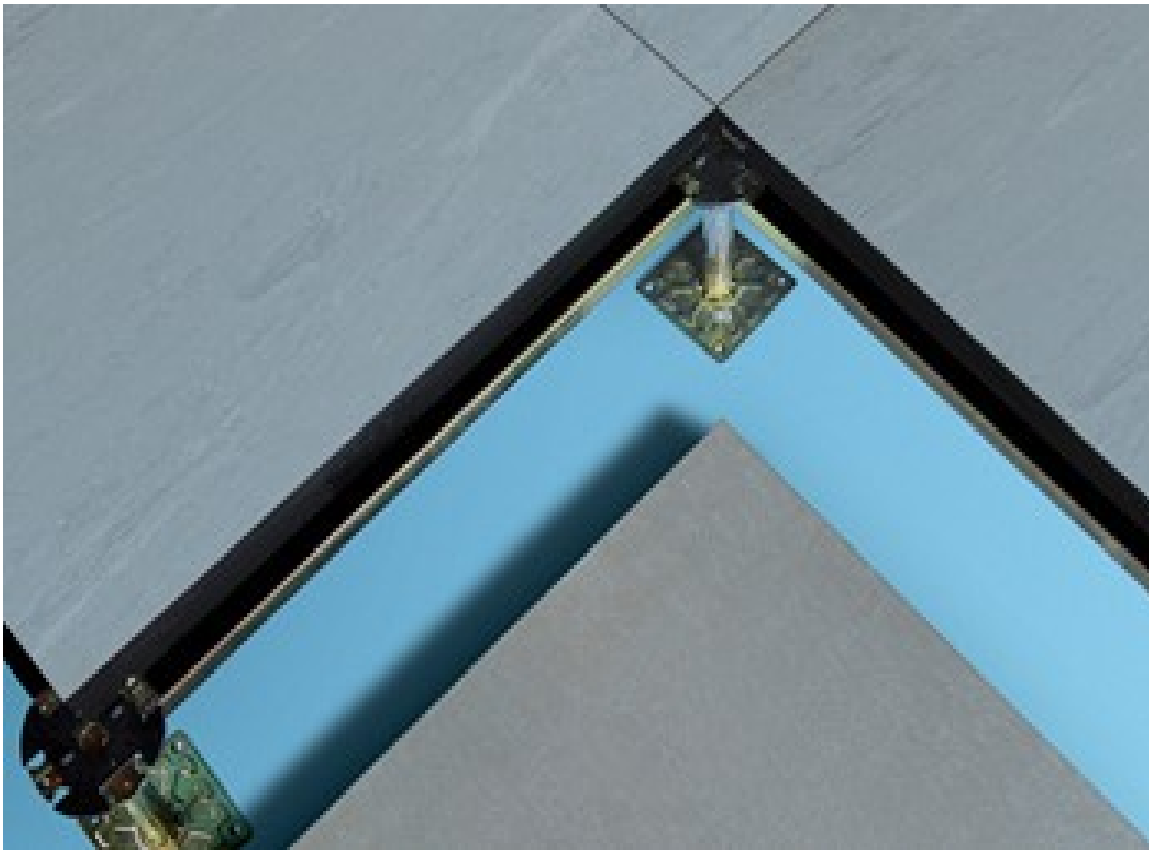


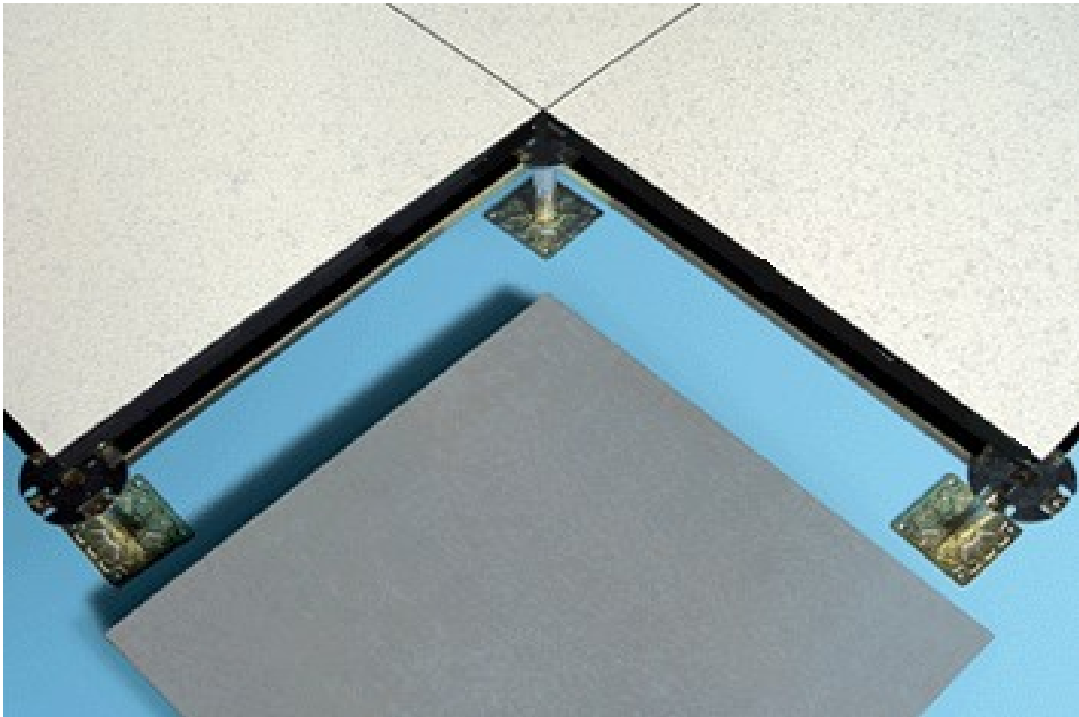


Concorde Calcium Sulphate Raised Flooring

Australian Company



CONCORDE CALCIUM SULPHATE CORE RAISED FLOOR SYSTEM



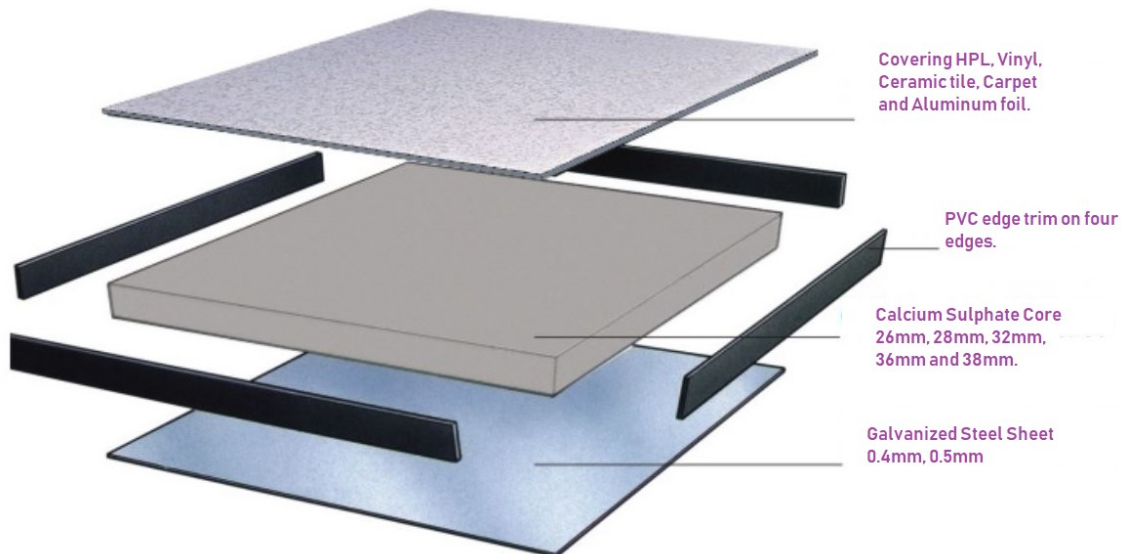
The modular square 30mm Calcium Sulphate Core panel consists of following parts:

- 28 mm thickness Calcium Sulphate Core
- Calcium Sulphate panel is encapsulated by covering HPL/VINYL on top and steel plate bottom.
- 4 pieces of black PVC strips along the side of the panel
- Covering: Steel plate, HPL, Vinyl, Rubber, Linoleum, Carpet.

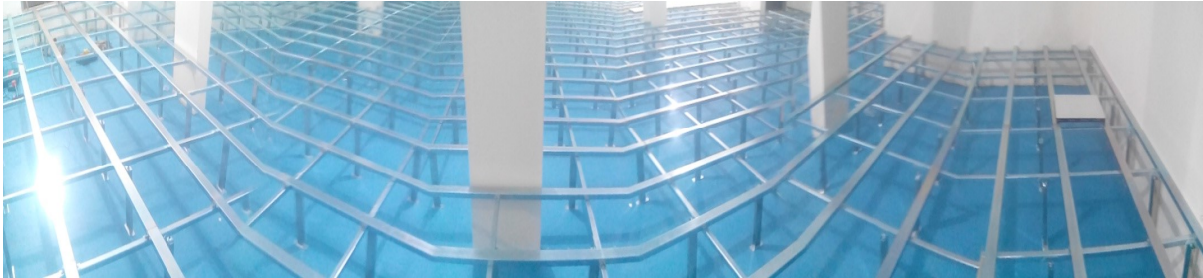
COMPOSITION OF CONCORDE CALCIUM SULPHATE RAISED FLOOR PANEL

Calcium sulphate raised flooring panel are widely used raise floor panel due to its rich features like inherently high mechanical character, high loading capabilities, less susceptible to change in humidity and temperature.

The Calcium Sulphate Panel consist of Homogeneous high density Calcium Sulphate and Mineral Fiber Core, with top covering, Galvanized steel at the bottom and PVC edge trim on all sides.



ISOCON SUB STRUCTURE



The CONCORDE ISOCON Substructure can be used for all types of Panels. The precision steel Padestals are adjustable in height and protected against corrosion by galvanization. The Padestal base plates are stably glued to the subfloor and can additionally be bolted.



The rectangular padestal base with heads are provided for strong load bearing. The primary and secondary rectangular galvanized stringers increases the load bearing capacity as well as the lateral stability of the whole system so that the CONCORDE access floor is forming a self-supporting construction even without connection to the wall.

Dimensions of Rectangular Stringers:

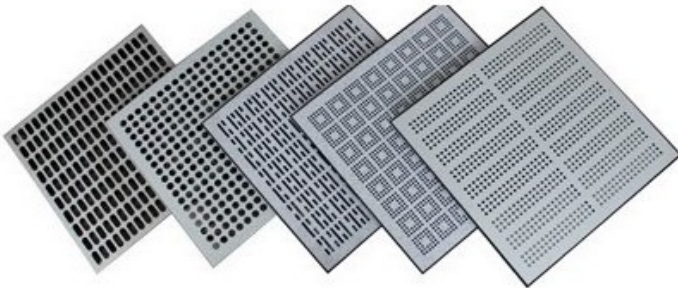
Primary Stringers: 80mm x 40mm x 1.6mm for 600mm FFH at a distance of 800mm.
40mm x 40mm x 1.6mm for 300mm FFH at a distance of 800mm.

Secondary Stringers: 80mm x 40mm x 1.6mm for 600mm FFH at a distance of 600mm.

Distance between Padestals on Primary stringers: 1200 mm.
800 mm. on Heavier loads on request.

ACCESSORIES

PERFORATED PANELS.



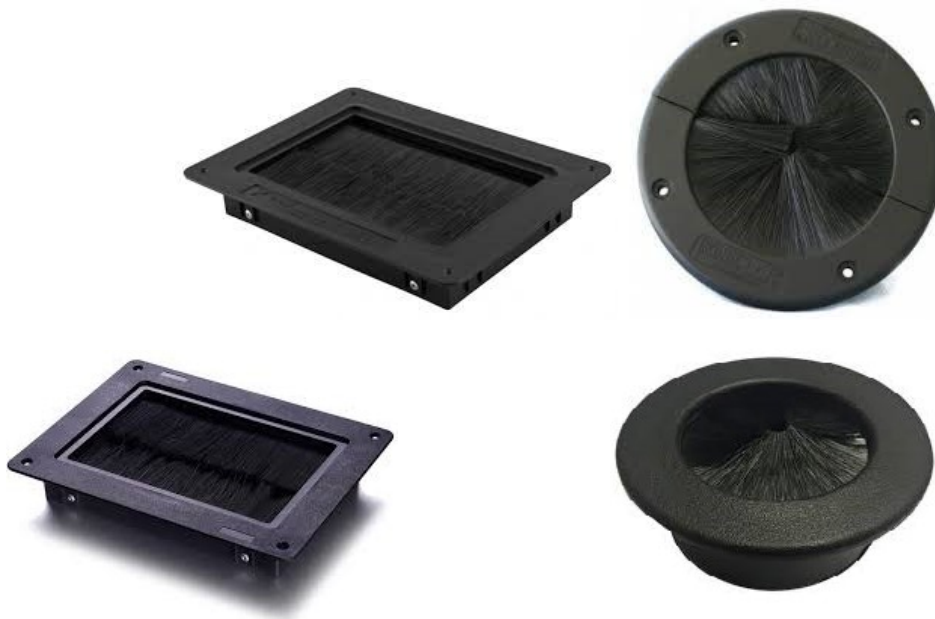
Perforated for air conditioning in working environments. Made of special steel to have the same load bearing capacity.

ELECTRICAL / DATA OUTLET BOX.



Electrical boxes for housing Electrical and Data Outlet on the Raised flooring.

BRUSH GROMMETS FOR WIRE MANAGEMENT



CONCORDE carries a wide variety of Raised Floor **Grommet Brush** Seals. Choose from a wide variety of sizes, filament and trim lengths or design your own **brush** to your unique specifications

DOUBLE CUP PANEL LIFTER



Technical Specifications

HPL FINISHED CALCIUM SULPHATE PANEL									
Panel	Size	Concentrated		Uniform		Ultimate		Impact	
		LBS	N	LBS/FT2	N/M2	LBS	N	LBS	N
CS4KNH	600x600x30	1000	4450	480	23000	3000	13360	180	800
CS5KNEH	600x600x30	1250	5563	689	33000	3750	16700	180	800

VINYL FINISHED CALCIUM SULPHATE PANEL									
Panel	Size	Concentrated		Uniform		Ultimate		Impact	
		LBS	N	LBS/FT2	N/M2	LBS	N	LBS	N
CS4KNVH	600x600x30	1000	4450	480	23000	3000	13360	180	800
CS5KNVEH	600x600x30	1250	5563	689	33000	3750	16700	180	800

HPL FINISHED CALCIUM SULPHATE PANEL									
Panel	Size	Concentrated		Uniform		Ultimate		Impact	
		LBS	N	LBS/FT2	N/M2	LBS	N	LBS	N
CS4.5KNH	600x600x38	1100	4895	528	25000	3300	14500	180	800
CS5.5KNEH	600x600x38	1350	6000	740	35000	4000	17800	180	800

VINYL FINISHED CALCIUM SULPHATE PANEL									
Panel	Size	Concentrated		Uniform		Ultimate		Impact	
		LBS	N	LBS/FT2	N/M2	LBS	N	LBS	N
CS4.5KVNH	600x600x38	1100	4895	528	25000	3300	14500	180	800
CS5.5KNVEH	600x600x38	1350	6000	740	35000	4000	17800	180	800